



中東欧、ロシア、CIS 諸国の主要経済指標 Main Economic Indicators for CEE, Russia and CIS

三菱東京UFJ銀行 経済調査室 (ロンドン駐在)
Economic Research Office (London),
The Bank of Tokyo-Mitsubishi UFJ
1st July 2016

目次 / Table of contents

1: 主要経済指標		2: 実質GDP成長率	
Main economic indicators		Real GDP growth rate	15
ポーランド/ Poland	03	3: 為替相場	
チェコ/ Czech Republic	04	Exchange rates	17
ハンガリー/ Hungary	05		
ルーマニア/ Romania	06		
スロバキア/ Slovakia	07		
クロアチア/ Croatia	08		
ブルガリア/ Bulgaria	09		
セルビア/ Serbia	10		
マケドニア/ Macedonia	11		
ロシア/ Russia	12		
カザフスタン/ Kazakhstan	13		
ウクライナ/ Ukraine	14		

ポーランド / Poland

ポーランド/Poland

	2013	2014	2015	15/Q1	Q2	Q3	Q4	16/Q1	16/01	02	03	04	05
名目GDP Nominal GDP (US\$ bn)	524.1	544.7	474.5	111.0	116.6	116.0	130.5	107.7					
実質GDP成長率* Real GDP Growth* (q/q, %)	1.2	3.3	3.6	1.3	0.5	0.8	1.3	-0.1					
(y/y, %)				3.6	3.1	3.4	4.3	3.0					
鉱工業生産 Industrial Production (y/y, %)	2.3	3.4	4.9	5.1	4.2	4.4	5.6	2.9	1.4	6.7	0.5	6.0	3.5
小売売上 Retail Sales (y/y, %)	2.6	4.0	4.2	4.2	4.3	2.8	5.4	4.1	3.2	6.2	3.0	5.5	4.3
銀行貸出伸び率 Bank Lending Growth (y/y, %)	4.2	6.7	7.2	7.2	7.4	7.5	7.2	4.7	6.5	6.2	4.7	7.1	5.4
消費者物価上昇率 Consumer Price Index (y/y, %)	0.9	0.0	-0.9	-1.5	-0.9	-0.7	-0.6	-0.9	-0.9	-0.8	-0.9	-1.1	-0.9
賃金上昇率 Wage Growth (y/y, %)	2.6	3.8	3.5	3.9	3.1	3.6	3.4	3.7	4.0	3.9	3.3	4.6	4.1
失業率 Unemployment rate (%)	13.5	12.3	10.5	11.8	10.7	9.9	9.7	10.2	10.3	10.3	10.0	9.5	9.1
貿易収支* Trade Balance (US\$ m)	-2,601	-3,516	4,117	1,702	775	-500	2,108	2,416	765	762	891	1,031	-
輸出額 Exports (US\$ m)	205,007	219,719	198,137	49,494	49,574	48,585	50,488	49,196	14,809	16,643	17,780	17,511	-
輸出伸び率 Exports Growth (y/y, %)	10.6	7.2	-9.8	-10.8	-12.7	-10.2	-5.9	-0.6	-7.6	2.6	3.1	7.7	-
輸入額 Imports (US\$ m)	207,608	223,234	194,020	47,791	48,800	49,085	48,380	46,779	14,044	15,881	16,889	16,480	-
輸入伸び率 Imports Growth (y/y, %)	4.3	7.5	-13.1	-14.9	-15.0	-10.9	-11.7	-2.1	-9.2	2.2	0.7	0.8	-
経常収支 Current Account Balance (US\$ m)	-6,744	-11,125	-1,169	1,010	953	-2,614	-518	329					
資本収支 Capital & Financial Account Balance (US\$ m)	5,947	8,760	17,996	7,406	2,835	6,645	1,110	4,212					
対内直接投資 Foreign Direct Investment (inflow) (US\$ m)	795	17,275	7,353	4,885	-719	2,683	504	4,598					
外貨準備高 International Reserve (US\$ m)	102,236	96,462	91,395	93,231	100,166	97,740	91,395	96,437					
対外債務残高 Gross External Debt (US\$ m)	384,083	354,720	328,446	330,195	342,955	343,764	328,446	-					
株価指数 Stock price index	48,323	52,209	52,027	52,458	55,390	51,669	48,654	45,361	43,842	44,738	47,316	47,992	46,497
短期金利 (Interbank 3m) Short-term interest rates (Interbank 3m)	3.02	2.51	1.75	1.87	1.67	1.72	1.73	1.69	1.71	1.69	1.67	1.67	1.67
EU調整長期金利 (10年物国債) Long-term interest rates (Gov.10y bond yields)	4.03	3.52	2.70	2.25	2.79	2.98	2.78	2.97	3.00	3.03	2.89	2.95	3.04
Zloty/USD	3.16	3.16	3.77	3.72	3.70	3.77	3.90	3.96	4.06	3.96	3.85	3.80	3.90
Zloty/Euro	4.20	4.19	4.18	4.19	4.09	4.19	4.26	4.36	4.40	4.40	4.29	4.31	4.40
JPY/Zloty	30.88	33.55	32.10	32.01	32.84	32.42	31.17	29.13	29.17	28.92	29.29	28.80	27.93

(資料) Macrobond, (注) 実質GDP成長率の前期比データは季節調整済、鉱工業生産は季節調整済み、貿易収支は通関ベース

(Source) Macrobond, (Note) Q/Q real GDP growth: seasonally adjusted, Industrial production: Seasonally adjusted, Trade balance: Custom based

チェコ / Czech Republic

チェコ共和国/Czech Republic

	2013	2014	2015	15/Q1	Q2	Q3	Q4	16/Q1	16/01	02	03	04	05
名目GDP Nominal GDP (US\$ bn)	208.4	205.2	181.9	44.9	45.0	46.2	45.8	46.7					
実質GDP成長率* Real GDP Growth* (q/q, %)	-0.6	2.0	4.2	1.3	1.2	1.1	0.4	0.4					
(y/y, %)				4.0	4.5	4.1	4.3	2.6					
鉱工業生産* Industrial Production* (y/y, %)	0.2	5.0	4.8	5.0	5.5	6.0	2.8	3.3	4.1	1.8	4.1	1.3	-
小売売上 Retail Sales (y/y, %)	1.1	5.6	8.0	8.3	8.7	6.2	8.7	7.6	5.7	11.5	5.8	8.5	-
銀行貸出伸び率 Bank Lending Growth (y/y, %)	3.7	3.8	6.4	4.6	5.7	8.6	6.4	7.8	6.5	7.0	7.8	7.8	7.8
消費者物価上昇率 Consumer Price Index (y/y, %)	1.4	0.4	0.3	0.1	0.7	0.4	0.1	0.5	0.6	0.5	0.3	0.6	0.1
賃金上昇率 Wage Growth (y/y, %)	-0.1	2.9	2.7	1.7	2.8	3.1	3.2	4.4					
失業率 Unemployment rate (%)	7.0	6.1	5.1	5.8	5.1	4.8	4.5	4.2	4.3	4.2	4.1	4.1	-
貿易収支* Trade Balance (US\$ m)	5,444	7,032	5,699	2,197	1,583	810	1,106	2,792	942	908	941	989	-
輸出額 Exports (US\$ m)	142,393	151,668	135,638	33,999	34,093	33,081	34,452	34,576	10,597	11,713	12,279	12,296	-
輸出伸び率 Exports Growth (y/y, %)	2.2	13.0	5.9	7.6	6.7	3.3	6.2	1.6	1.6	5.5	-1.8	4.3	-
輸入額 Imports (US\$ m)	136,949	144,636	129,939	31,802	32,510	32,272	33,346	31,784	9,655	10,805	11,338	11,307	-
輸入伸び率 Imports Growth (y/y, %)	0.7	12.1	6.4	8.2	7.8	4.9	5.0	-0.1	-0.2	4.1	-3.8	1.0	-
経常収支 Current Account Balance (US\$ m)	-1,113	360	1,682	3,744	-1,194	-1,459	591	4,640					
資本収支 Capital & Financial Account Balance (US\$ m)	7,704	4,594	12,194	5,797	4,019	45	2,308	5,199					
対内直接投資 Foreign Direct Investment (inflow) (US\$ m)	7,358	8,095	2,468	1,106	-3	949	426	904					
外貨準備高 International Reserve (US\$ m)	55,798	54,085	64,148	52,036	56,683	62,649	64,148	72,880					
対外債務残高 Gross External Debt (US\$ m)	99,652	106,251	115,877	107,429	109,064	117,524	115,877	117,446					
株価指数 Stock price index	1,216	1,240	1,258	1,239	1,275	1,272	1,245	1,160	1,179	1,137	1,164	1,174	1,145
短期金利 (Interbank 3m) Short-term interest rates (Interbank 3m)	0.38	0.34	0.29	0.33	0.31	0.31	0.29	0.29	0.29	0.28	0.29	0.29	0.29
EU調整長期金利 (10年物国債) Long-term interest rates (Gov.10y bond yields)	2.13	1.58	0.72	0.55	0.79	0.95	0.57	0.54	0.68	0.52	0.42	0.47	0.49
Koruna/USD	19.57	20.76	24.60	24.54	24.76	24.36	24.72	24.53	24.91	24.38	24.30	23.84	23.91
Koruna/Euro	25.99	27.54	27.28	27.63	27.39	27.08	27.06	27.04	27.03	27.04	27.05	27.03	27.03
JPY/Koruna	4.99	5.10	4.92	4.86	4.90	5.01	4.91	4.70	4.75	4.70	4.65	4.60	4.56

(資料) Macrobond, (注) 実質GDP成長率の前期比データは季季節・稼働日調整済、鉱工業生産は稼働日調整済み、貿易収支は通関ベース

(Source) Macrobond, (Note) Q/Q real GDP growth: seasonally and calendar adjusted. Industrial production: calendar adjusted. Trade balance: Custom based

ハンガリー / Hungary

ハンガリー/Hungary

		2013	2014	2015	15/Q1	Q2	Q3	Q4	16/Q1	16/01	02	03	04	05
名目GDP Nominal GDP	(US\$ bn)	134.5	138.2	120.7	27.4	29.8	31.0	32.4	27.1					
実質GDP成長率* Real GDP Growth*	(q/q, %) (y/y, %)	1.8	3.6	3.0	1.4 3.5	0.4 2.7	0.3 2.4	0.6 3.2	-0.8 0.9					
鉱工業生産* Industrial Production*	(y/y, %)	1.5	7.3	7.2	8.0	6.2	5.9	8.9	0.6	2.3	1.8	-2.4	5.3	-
小売売上 Retail Sales	(y/y, %)	1.6	5.2	5.8	7.5	5.7	5.5	4.5	4.4	2.2	6.6	4.3	6.7	-
銀行貸出伸び率 Bank Lending Growth	(y/y, %)	-4.2	-2.3	-11.1	-7.6	-8.0	-9.7	-11.1	-6.5	-13.8	-12.7	-6.5	-6.2	-7.4
消費者物価上昇率 Consumer Price Index	(y/y, %)	1.7	-0.2	-0.1	-1.0	0.3	0.0	0.5	0.3	0.9	0.3	-0.2	0.2	-0.2
賃金上昇率 Wage Growth	(y/y, %)	3.4	3.1	4.2	4.1	2.9	4.6	5.2	6.0	5.6	5.9	6.6	6.4	-
失業率 Unemployment rate	(%)	10.3	7.9	6.9	7.6	7.2	6.6	6.3	6.1	6.2	6.1	6.0	5.8	5.5
貿易収支* Trade Balance	(US\$ m)	8,708	8,349	9,003	2,884	1,924	2,092	2,103	2,715	574	1,084	1,057	1,120	-
輸出額 Exports	(US\$ m)	108,015	112,537	100,388	25,130	25,143	24,919	25,195	24,938	7,431	8,596	8,910	9,069	-
輸出伸び率 Exports Growth	(y/y, %)	5.0	4.2	-10.8	-11.3	-13.4	-11.8	-6.4	-0.8	-5.8	4.8	-1.4	10.7	-
輸入額 Imports	(US\$ m)	99,307	104,188	91,385	22,246	23,219	22,827	23,092	22,223	6,857	7,512	7,853	7,948	-
輸入伸び率 Imports Growth	(y/y, %)	5.3	4.9	-12.3	-13.3	-14.9	-11.7	-9.0	-0.1	-3.2	4.1	-1.2	2.9	-
経常収支 Current Account Balance	(US\$ m)	5,346	2,819	5,291	1,547	982	1,656	1,114	1,918					
資本収支 Capital & Financial Account Balance	(US\$ m)	13,265	11,688	15,511	2,055.1	4,024.5	2,948.3	6,421.6	1,419.7					
対内直接投資 Foreign Direct Investment (inflow)	(US\$ m)	3,360	7,454	-17,309	559.4	-1,366.3	1,182.9	-17,437.9	-9,336.0					
外貨準備高 International Reserve	(US\$ m)	46,389	41,901	33,020	39,463	38,615	35,961	33,020	31,169					
対外債務残高 Gross External Debt	(US\$ m)	165,221	144,830	126,561	137,350	137,808	130,788	126,561	129,439					
株価指数 Stock price index		18,652	17,932	21,036	17,709	21,993	21,744	22,692	24,092	23,685	23,203	25,387	26,699	26,537
短期金利 (Interbank 3m) Short-term interest rates (Interbank 3m)		4.30	2.41	1.61	2.07	1.65	1.37	1.35	1.33	1.35	1.35	1.30	1.17	1.07
EU調整長期金利 (10年物国債) Long-term interest rates (Gov.10y bond yields)		5.92	4.81	3.43	3.18	3.58	3.61	3.36	3.28	3.36	3.36	3.13	3.02	3.35
Forint/USD		223.61	232.78	279.39	274.19	276.74	280.72	285.72	283.06	289.89	279.78	279.83	274.67	278.49
Forint/Euro		296.93	308.71	309.93	308.99	305.85	312.10	312.70	312.15	314.74	310.37	311.42	311.46	314.58
JPY/Forint		0.436	0.455	0.433	0.435	0.439	0.435	0.425	0.407	0.408	0.410	0.404	0.399	0.391

(資料)Macrobond、(注)実質GDP成長率の前期比データは季節調整済、鉱工業生産は稼働日調整済み、失業率は3カ月移動平均、貿易収支は通関ベース。

(Source) Macrobond, (Note) Q/Q real GDP growth: seasonally adjusted. Industrial production: Calender and seasonally adjusted. Unemployment rate: three months moving average. Trade balance: Custom based

ルーマニア / Romania

ルーマニア/Romania

	2013	2014	2015	15/Q1	Q2	Q3	Q4	16/Q1	16/01	02	03	04	05
名目GDP Nominal GDP (US\$ bn)	191.6	199.3	177.8	35.5	40.5	49.5	52.0	36.8					
実質GDP成長率* Real GDP Growth* (q/q, %)	3.3	3.0	3.8	1.2	0.0	1.5	1.1	1.6					
(y/y, %)				4.3	3.4	3.6	3.8	4.3					
鉱工業生産* Industrial Production* (y/y, %)	7.3	6.3	3.0	3.2	3.1	3.3	2.5	-0.4	-0.9	-0.4	0.2	4.0	-
小売売上 Retail Sales (y/y, %)	1.6	8.3	9.4	3.5	6.3	12.1	15.6	20.0	17.9	20.9	21.3	22.3	-
銀行貸出伸び率 Bank Lending Growth (y/y, %)	-3.3	-3.3	3.0	-3.4	-0.1	0.6	3.0	2.8	2.8	2.4	2.8	3.0	-
消費者物価上昇率 Consumer Price Index (y/y, %)	4.0	1.1	-0.6	0.5	0.1	-1.8	-1.2	-2.6	-2.1	-2.7	-3.0	-3.3	-3.5
賃金上昇率 Wage Growth (y/y, %)	4.8	5.2	8.3	6.9	7.4	7.7	11.1	12.2	11.7	12.7	12.1	12.3	-
失業率 Unemployment rate (%)	7.1	6.8	6.8	6.9	6.8	6.8	6.6	6.4	6.5	6.4	6.4	6.4	-
貿易収支* Trade Balance (US\$ m)	-7,640	-8,041	-9,282	-1,550	-2,119	-2,492	-3,102	-2,151	-411	-677	-1,070	-948	-
輸出額 Exports (US\$ m)	65,796	69,579	60,553	15,060	15,100	15,426	14,976	15,281	4,467	5,337	5,487	5,334	-
輸出伸び率 Exports Growth (y/y, %)	13.6	5.8	-13.0	-13.9	-13.7	-14.0	-10.5	1.5	-8.2	6.9	5.7	12.1	-
輸入額 Imports (US\$ m)	73,436	77,620	69,836	16,609	17,219	17,917	18,078	17,432	4,878	6,015	6,557	6,282	-
輸入伸び率 Imports Growth (y/y, %)	4.5	5.7	-10.0	-12.6	-13.3	-9.8	-4.5	5.0	-3.9	10.8	8.0	15.1	-
経常収支 Current Account Balance (US\$ m)	-2,044	-910	-2,028	590	-993	-602	-999	-1,320					
資本収支 Capital & Financial Account Balance (US\$ m)	6,255	9,314	7,502	5,032	483	1,755	303	2,226					
対内直接投資 Foreign Direct Investment (inflow) (US\$ m)	3,846	3,886	3,882	1,072	1,121	1,174	522	1,062					
外貨準備高 International Reserve (US\$ m)	44,811	39,165	35,167	32,819	33,702	32,712	35,167	35,566					
対外債務残高 Gross External Debt (US\$ m)	135,156	114,661	97,789	99,540	101,313	99,785	97,789	101,437					
株価指数 Stock price index	5,713	6,745	7,214	7,079	7,395	7,301	7,087	6,474	6,463	6,260	6,680	6,638	6,425
短期金利 (Interbank 3m) Short-term interest rates (Interbank 3m)	4.22	2.53	1.33	1.45	1.35	1.37	1.16	0.83	0.94	0.79	0.78	0.77	0.75
EU調整長期金利 (10年国債) Long-term interest rates (Gov.10y bond yields)	5.41	4.49	3.47	2.99	3.51	3.86	3.53	3.42	3.60	3.33	3.34	3.49	3.43
Leu/USD	3.33	3.35	4.01	3.96	4.02	3.98	4.07	4.08	4.18	4.04	4.01	3.94	3.98
Leu/Euro	4.42	4.44	4.45	4.45	4.44	4.43	4.46	4.49	4.53	4.48	4.47	4.47	4.50
JPY/Leu	29.33	31.61	30.20	30.13	30.22	30.67	29.80	28.27	28.32	28.36	28.13	27.78	27.36

(資料) Macrobond他、(注) 実質GDP成長率の前期比データは季節調整済、鉱工業生産は稼働日調整済、貿易収支は通関ベース

(Source) Macrobond, (Note) Q/Q real GDP growth: seasonally adjusted. Industrial production: Calendar adjusted. Trade balance: Custom based

スロバキア / Slovakia

スロバキア/Slovakia

	2013	2014	2015	15/Q1	Q2	Q3	Q4	16/Q1	16/01	02	03	04	05
名目GDP Nominal GDP (US\$ bn)	98.0	100.2	86.6	20.1	21.5	22.9	22.1	20.3					
実質GDP成長率* Real GDP Growth* (q/q, %)	1.4	2.6	3.6	1.0	0.9	1.0	1.0	0.8					
(y/y, %)				2.9	3.4	3.7	4.3	3.4					
鉱工業生産* Industrial Production* (y/y, %)	3.9	8.7	7.1	12.3	4.9	6.0	5.2	2.0	1.3	7.2	-2.4	8.3	-
小売売上 Retail Sales (y/y, %)	-1.3	3.5	-1.9	-3.6	-1.9	-0.2	-1.7	0.5	0.5	0.8	0.1	4.1	-
銀行貸出伸び率 Bank Lending Growth (y/y, %)	5.4	6.7	9.7	7.8	8.7	8.1	9.7	8.0	8.6	7.8	8.0	8.2	7.94
消費者物価上昇率 Consumer Price Index (y/y, %)	0.4	-0.1	-0.5	-0.4	-0.1	-0.5	-0.5	-0.5	-0.6	-0.3	-0.5	-0.4	-0.7
賃金上昇率 Wage Growth (y/y, %)	2.3	4.1	2.9	2.2	2.3	2.9	4.1	3.3					
失業率 Unemployment rate (%)	14.2	13.2	11.5	12.2	11.5	11.3	10.9	10.4	10.5	10.4	10.3	10.2	-
貿易収支* Trade Balance (US\$ m)	5,619	6,237	3,663	1,399	1,035	532	706	1,245	403	497	344	458	-
輸出額 Exports (US\$ m)	85,191	85,843	75,268	18,572	18,778	18,306	19,603	18,295	5,481	6,358	6,465	6,682	-
輸出伸び率 Exports Growth (y/y, %)	3.4	1.1	4.8	2.3	3.8	5.8	7.4	0.8	0.7	6.4	-4.7	6.4	-
輸入額 Imports (US\$ m)	79,573	79,607	71,604	17,173	17,743	17,774	18,898	17,050	5,078	5,861	6,121	6,223	-
輸入伸び率 Imports Growth (y/y, %)	2.4	0.4	7.5	3.0	6.9	11.2	9.1	1.5	0.3	7.0	-2.7	3.9	-
経常収支 Current Account Balance (US\$ m)	1,485	50	-1,127	370	-375	-873	-235	-165					
資本収支 Capital & Financial Account Balance (US\$ m)	-642	-2,103	2,120	475	213	1,254	149	353					
対内直接投資 Foreign Direct Investment (inflow) (US\$ m)	2,137	846	2,126	1,899	-149	-8	355	1,682					
外貨準備高 International Reserve (US\$ m)	922	1,392	1,812	2,612	1,522	2,237	1,812	1,761					
対外債務残高 Gross External Debt (US\$ m)	83,303	82,023	73,015	74,062	74,991	75,533	73,015	-					
株価指数 Stock price index	190.8	211.1	259.8	237.3	249.2	258.8	292.3	311.7	299.2	310.9	324.9	326.1	322.9
短期金利 (Interbank 3m) Short-term interest rates (Interbank 3m)	0.22	0.21	-0.02	0.05	-0.01	-0.03	-0.09	-0.19	-0.15	-0.18	-0.23	-0.25	-0.26
長期金利 (10年物国債) Long-term interest rates (Gov.10y bond yields)	3.19	2.07	0.89	0.76	1.01	1.04	0.73	0.57	0.71	0.56	0.43	0.38	0.41
EUR/USD	0.75	0.75	0.90	0.89	0.90	0.90	0.91	0.91	0.92	0.90	0.90	0.88	0.88
GBP/EUR	0.85	0.81	0.73	0.74	0.72	0.72	0.72	0.77	0.75	0.78	0.78	0.79	0.78
JPY/EUR	129.56	140.45	134.25	134.12	134.24	135.78	132.89	127.01	128.34	127.13	125.66	124.26	123.13

(資料) Macrobond, (注) 実質GDP成長率の前期比データは季節/稼働日調整済、鉱工業生産は季節調整済み、貿易収支は通関ベース

(Source) Macrobond, (Note) Q/Q real GDP growth: seasonally adjusted. Industrial production: Seasonally adjusted. Trade balance: Custom based

クロアチア / Croatia

クロアチア/Croatia

	2013	2014	2015	15/Q1	Q2	Q3	Q4	16/Q1	16/01	02	03	04	05
名目GDP Nominal GDP (US\$ bn)	57.7	57.1	48.7	11.1	12.1	13.5	12.0	11.2					
実質GDP成長率* Real GDP Growth* (q/q, %)	-1.1	-0.4	1.6	0.2	0.8	1.5	-0.6	0.6					
(y/y, %)				0.5	1.2	2.8	1.9	2.7					
鉱工業生産* Industrial Production* (y/y, %)	-1.4	1.3	2.4	-0.6	2.7	4.1	3.7	6.5	8.3	4.5	6.8	5.0	1.9
小売売上 Retail Sales (y/y, %)	-0.5	0.4	2.4	2.2	1.8	2.3	3.3	4.8	2.1	8.1	4.3	3.2	-
銀行貸出伸び率 Bank Lending Growth (y/y, %)	0.9	-2.3	-2.0	-0.6	-0.7	1.4	-2.0	-5.7	-4.4	-5.6	-5.7	-5.3	-
消費者物価上昇率 Consumer Price Index (y/y, %)	0.5	-0.1	-0.3	0.0	0.1	-0.5	-0.3	-0.9	-0.2	-0.6	-0.9	-0.9	-1.2
賃金上昇率 Wage Growth (y/y, %)	1.0	-0.1	0.6	2.7	3	0.6	0.6	-					
失業率 Unemployment rate (%)	17.3	17.3	16.3	17.0	16.2	16.4	15.6	15.1	18.5	17.8	17.2	15.9	14.4
貿易収支* Trade Balance (US\$ m)	-8,745	-8,430	-7,359	-1,889	-1,955	-1,916	-1,604	-1,869	-557	-643	-732	-	-
輸出額 Exports (US\$ m)	11,847	12,946	11,900	2,626	3,024	3,075	3,169	2,743	838	1,018	1,086	-	-
輸出伸び率 Exports Growth (y/y, %)	6.3	9.3	-8.1	5.8	14.6	7.3	11.8	6.6	-6.8	1.7	0.4	-	-
輸入額 Imports (US\$ m)	20,592	21,376	19,260	4,514	4,980	4,991	4,772	4,611	1,395	1,661	1,818	-	-
輸入伸び率 Imports Growth (y/y, %)	7.1	3.8	-9.9	6.8	5.8	6.6	12.0	4.3	-0.6	1.6	-3.7	-	-
経常収支 Current Account Balance (US\$ m)	566	454	2,540	-1,426	31	4,364	-427	-					
資本収支 Capital & Financial Account Balance (US\$ m)	-440	-68	2,436	-1,026	227	2,959	275	-					
対内直接投資 Foreign Direct Investment (inflow) (US\$ m)	937	3,960	157	445	122	189	-599	-					
外貨準備高 International Reserve (US\$ m)	17,789	15,355	14,887	15,207	15,314	15,000	14,887	15,041					
対外債務残高 Gross External Debt (US\$ m)	63,339	56,473	49,456	52,760	54,408	52,376	49,456	-					
株価指数 Stock price index	1,856	1,794	1,734	1,755	1,736	1,757	1,691	1,619	1,620	1,609	1,629	1,676	1,697
短期金利 (Interbank 3m) Short-term interest rates (Interbank 3m)	1.51	0.97	1.23	1.11	0.97	1.37	1.46	0.92	1.07	0.88	0.83	0.82	0.80
Kuna/USD	5.71	5.76	6.87	6.82	6.85	6.82	6.97	6.91	7.06	6.89	6.79	6.61	6.63
Kuna/EUR	7.58	7.63	7.62	7.68	7.58	7.58	7.63	7.62	7.66	7.64	7.56	7.49	7.50
JPY/Kuna	17.10	18.40	17.63	17.47	17.72	17.91	17.42	16.68	16.76	16.65	16.63	16.58	16.42

(資料) Macrobond, (注) 実質GDP成長率の前期比データは季節調整済、鉱工業生産は季節調整済み、貿易収支は通関ベース

(Source) Macrobond, (Note) Q/Q real GDP growth: seasonally adjusted. Industrial production: Seasonally adjusted. Trade balance: Custom based

ブルガリア / Bulgaria

ブルガリア/Bulgaria

	2013	2014	2015	15/Q1	Q2	Q3	Q4	16/Q1	16/01	42401	42430	16/4	42491	
名目GDP Nominal GDP	(US\$ bn)	55.5	56.5	48.8	10.1	12.2	13.3	13.2	10.4					
実質GDP成長率*	(q/q, %)	1.2	1.5	3.0	0.9	0.7	0.7	0.7	0.7					
Real GDP Growth*	(y/y, %)				2.6	2.9	3.1	3.0	2.9					
鉱工業生産* Industrial Production*	(y/y, %)	-0.5	2.9	3.5	2.2	4.3	2.8	2.3	2.9	0.8	3.9	4.1	1.1	-
小売売上 Retail Sales	(y/y, %)	3.8	10.7	1.0	2.1	1.3	0.1	0.5	2.5	0.9	2.7	3.9	4.0	-
銀行貸出伸び率 Bank Lending Growth	(y/y, %)	0.0	-8.1	-1.5	-9.1	-9.9	-9.8	-1.5	-2.2	-1.8	-1.8	-2.2	-1.8	-
消費者物価上昇率 Consumer Price Index	(y/y, %)	-0.9	-2.0	-0.9	-1.1	-0.6	-1.0	-0.9	-1.9	-0.4	-1.0	-1.9	-2.5	-2.5
賃金上昇率 Wage Growth	(y/y, %)	3.7	2.2	7.9	8.0	7.6	8.0	8.1	8.3	8.2	8.9	7.9	-	-
失業率 Unemployment rate	(%)	13.0	11.4	9.1	9.9	9.9	8.8	7.9	7.4	7.5	7.4	7.3	7.1	-
貿易収支* Trade Balance	(US\$ m)	-4,722	-5,332	-3,507	-900	-853	-595	-1,156	-507	-23	-190	-297	-	-
輸出額 Exports	(US\$ m)	29,566	29,319	25,784	6,191	6,584	6,600	6,408	5,971	1,901	1,976	2,094	-	-
輸出伸び率 Exports Growth	(y/y, %)	10.8	-0.8	-12.1	-7.2	-12.0	-17.0	-11.2	-3.6	-5.7	-0.6	-4.0	-	-
輸入額 Imports	(US\$ m)	34,288	34,652	29,291	7,091	7,437	7,195	7,564	6,478	1,924	2,166	2,391	-	-
輸入伸び率 Imports Growth	(y/y, %)	4.8	1.1	-15.5	-13.4	-15.8	-20.6	-11.8	-8.6	-14.3	-9.2	-2.5	-	-
経常収支 Current Account Balance	(US\$ m)	711	484	675	128	-227	1,292	-506	344					
資本収支 Capital & Financial Account Balance	(US\$ m)	2,506	-1,496	531	-1,234	696	494	550	696					
対内直接投資 Foreign Direct Investment (inflow)	(US\$ m)	1,920	1,710	-	705	484	412	159	473					
外貨準備高 International Reserve	(US\$ m)	18,335	18,576	20,783	18,879	19,991	21,109	20,783	22,719					
対外債務残高 Gross External Debt	(US\$ m)	51,864	48,666	37,959	43,251	40,688	39,370	37,959	-					
株価指数 Stock price index		427.1	555.7	474.2	497.7	493.2	465.1	442.7	447.7	450.0	447.0	446.2	438.9	440.9
短期金利 (Interbank 3m) Short-term interest rates (Interbank 3m)		1.14	0.78	0.54	0.61	0.55	0.52	0.49	0.22	0.30	0.19	0.16	0.13	0.14
長期金利 (10年物国債) Long-term interest rates (Gov.10y bond yields)		3.47	3.35	2.49	2.65	2.36	2.36	2.59	2.59	2.44	2.67	2.66	2.44	2.37
Lev/USD		1.48	1.48	1.77	1.74	1.78	1.76	1.79	1.78	1.80	1.76	1.76	1.72	1.73
Lev/EUR		1.96	1.96	1.96	1.96	1.96	1.96	1.96	1.96	1.96	1.96	1.96	1.96	1.96
JPY/Lev		66.04	71.59	68.46	68.43	68.38	69.26	67.78	64.90	65.56	64.98	64.21	63.54	62.92

(資料) Macrobond, (注) 実質GDP成長率データは季節/稼働日調整済、鉱工業生産は季節調整済み、貿易収支は通関ベース

(Source) Macrobond, (Note) Q/Q real GDP growth: seasonally adjusted. Industrial production: Seasonally adjusted. Trade balance: Custom based

セルビア / Serbia

セルビア/Serbia

	2013	2014	2015	15/Q1	Q2	Q3	Q4	16/Q1	16/01	02	03	04	05
名目GDP Nominal GDP (US\$ bn)	45.5	44.2	36.5	8.2	9.1	9.6	9.7	8.3					
実質GDP成長率* Real GDP Growth* (q/q, %)	2.6	-1.8	0.7	0.2	1.7	0.2	-0.6	1.6					
(y/y, %)				-1.8	1.1	2.3	1.2	3.5					
鉱工業生産* Industrial Production* (y/y, %)	5.6	-6.1	8.4	-2.0	12.1	13.2	10.2	10.4	8.3	14.0	8.8	8.4	0.9
小売売上 Retail Sales (y/y, %)	-4.9	2.4	1.6	-0.1	1.9	1.8	2.4	9.9	5.3	11.6	12.7	9.2	11.1
消費者物価上昇率 Consumer Price Index (y/y, %)	7.9	2.1	1.4	0.9	1.7	1.5	1.4	1.5	2.4	1.5	0.6	0.4	0.7
賃金上昇率 Wage Growth (y/y, %)	5.7	1.1	-0.4	-0.4	-1.0	-0.8	0.4	4.5	2.9	3.9	6.6	7.9	0.1
貿易収支* Trade Balance (US\$ m)	-5,940	-5,764	-4,824	-1,241	-1,072	-1,093	-1,418	-998	-245	-346	-407	-311	-402
輸出額 Exports (US\$ m)	14,611	14,845	13,370	3,126	3,539	3,376	3,329	3,407	924	1,174	1,309	1,317	1,271
輸出伸び率 Exports Growth (y/y, %)	30.1	1.6	-9.9	-13.5	-10.3	-8.8	-7.1	9.0	1.8	13.0	10.9	19.0	5.8
輸入額 Imports (US\$ m)	20,551	20,609	18,333	4,367	4,611	4,469	4,886	4,405	1,169	1,520	1,716	1,628	1,673
輸入伸び率 Imports Growth (y/y, %)	8.6	0.3	-11.0	-10.6	-15.0	-14.5	-3.7	0.9	-5.2	4.1	2.6	10.4	11.6
経常収支 Current Account Balance (US\$ m)	-2,786	-2,632	-1,749	-575	-308	-381	-487	-274					
資本収支 Capital & Financial Account Balance (US\$ m)	-2,144	-2,253	-1,356	-476	-154	-269	-458	-93					
対内直接投資 Foreign Direct Investment (inflow) (US\$ m)	2,055	1,990	2,345	455	582	660	645	433					
外貨準備高 International Reserve (US\$ m)	14,803	11,372	10,727	10,671	10,852	11,178	10,727	10,027					
対外債務残高 Gross External Debt (US\$ m)	35,483	31,214	28,628	28,699	29,563	29,350	28,628	29,546					
株価指数 Stock price index	534.6	612.1	657.3	661.2	703.2	642.9	623.0	598.5	606.6	589.5	599.3	611.0	617.2
短期金利 (Interbank 3m) Short-term interest rates (Interbank 3m)	10.16	8.27	6.14	8.82	6.62	5.24	3.99	3.39	3.53	3.36	3.29	3.29	3.29
Dinar/USD	85.18	88.48	108.86	107.90	108.89	108.13	110.49	111.52	113.07	110.85	110.71	108.28	108.68
Dinar/EUR	113.08	117.35	120.73	121.43	120.42	120.18	120.93	122.94	122.66	122.93	123.21	122.78	122.85
JPY/Dinar	1.15	1.20	1.11	1.10	1.11	1.13	1.10	1.03	1.05	1.03	1.02	1.01	1.00

(資料) Macrobond、(注) 実質GDP成長率の前期比データは季節/稼働日調整済、鉱工業生産は季節調整済み、月次の鉱工業生産は製造業のみ、貿易収支は通関ベース

(Source) Macrobond, (Note) Q/Q real GDP growth: seasonally adjusted. Industrial production: Seasonally adjusted, monthly data for IP covers only manufacturing sector. Trade balance: Custom based

マケドニア / Macedonia

マケドニア/Macedonia

	2013	2014	2015	15/Q1	Q2	Q3	Q4	16/Q1	16/01	02	03	04	05
名目GDP Nominal GDP (US\$ bn)	10.8	11.3	10.1	2.4	2.5	2.7	2.6	2.5					
実質GDP成長率* Real GDP Growth* (y/y, %)	2.9	3.6	3.7	3.8	3.4	3.6	3.9	2.0					
鉱工業生産(製造業)* Industrial Production (Manufacturing)* (y/y, %)	9.0	19.4	2.9	12.8	10.3	15.7	2.9	7.8	8.8	16.4	7.8	17.9	-
小売売上 Retail Sales (y/y, %)	-8.0	-1.3	6.1	2.0	7.2	-1.1	6.1	15.6	7.4	12.6	15.6	11.3	7.4
消費者物価上昇率 Consumer Price Index (y/y, %)	1.4	-0.6	-0.3	-0.9	0.2	-0.2	-0.4	0.0	0.2	0.0	-0.3	-0.7	-
賃金上昇率 Wage Growth (y/y, %)	1.2	1.2	2.4	1.7	3.1	3.0	1.8	2.8	2.0	3.4	3.0	-	-
失業率 Unemployment rate (%)	29.0	28.0	26.1	27.3	26.8	25.5	24.6	24.5					
貿易収支* Trade Balance (US\$ m)	-2,321	-2,337	-1,909	-424	-493	-400	-591	-411	-71.5	146.9	-193.4	-192.1	-
輸出額 Exports (US\$ m)	4,295	4,964	4,489	1,041	1,145	1,149	1,153	1,086	313.5	383.6	389.2	403.7	-
輸出伸び率 Exports Growth (y/y, %)	3.6	15.1	-9.6	-6.9	-11.2	-11.8	-7.7	4.3	-6.7	13.2	6.3	26.2	-
輸入額 Imports (US\$ m)	6,616	7,301	6,399	1,465	1,638	1,550	1,745	1,498	385.0	530.5	582.6	595.9	-
輸入伸び率 Imports Growth (y/y, %)	-1.7	10.1	-12.3	-13.9	-12.7	-16.7	-6.3	2.2	-9.0	14.3	0.7	10.6	-
経常収支 Current Account Balance (US\$ m)	-178	-91	-141	-52	-91	145	-142	-					
資本収支 Capital & Financial Account Balance (US\$ m)	-122	-39	-98	-21	-90	163	-148	-					
対内直接投資 Foreign Direct Investment (inflow) (US\$ m)	401	49	191	40	86	22	43	-					
外貨準備高 International Reserve (US\$ m)	2,485	2,701	2,239	2,296	2,253	2,205	2,239	2,296					
対外債務残高 Gross External Debt (US\$ m)	7,194	7,287	6,942	6,708	7,061	6,982	6,942	-					
株価指数 Stock price index	1,725.4	1,735.6	1,730.1	1,829.8	1,683.1	1,665.4	1,744.2	1,805.7	1,815.3	1,806.5	1,796.2	1,760.3	1,740.5
短期金利 (Interbank 3m) Short-term interest rates (Interbank 3m)	3.69	3.08	1.91	2.37	1.86	1.72	1.72	1.77	1.76	1.78	1.77	1.80	1.97
Denar/USD	46.39	46.44	55.35	54.46	55.54	55.27	56.09	55.75	56.57	55.41	55.31	54.17	54.33
Denar/EUR	61.58	61.60	61.38	61.28	61.42	61.43	61.39	61.46	61.37	61.45	61.56	61.42	61.41
JPY/Denar	2.10	2.28	2.19	2.19	2.19	2.21	2.16	2.07	2.09	2.07	2.04	2.02	2.00

(資料) Macrobond, (注) 実質GDP成長率データは季節/稼働日調整済、鉱工業生産は季節調整済み、貿易収支は通関ベース

(Source) Macrobond, (Note) Q/Q real GDP growth: seasonally adjusted. Industrial production: Seasonally adjusted. Trade balance: Custom based

ロシア / Russia

ロシア/Russia

		2013	2014	2015	15/Q1	Q2	Q3	Q4	16/Q1	16/01	02	03	04	05
名目GDP Nominal GDP	(US\$ bn)	2,229.0	2,018.8	1,318.6	289.5	365.4	337.0	332.7	248.6					
実質GDP成長率* Real GDP Growth*	(q/q, %) (y/y, %)	1.2	0.7	-3.7	-1.2	-1.3	-0.6	-	-					
					-2.8	-4.5	-3.7	-3.8	-1.2					
鉱工業生産 Industrial Production	(y/y, %)	0.4	1.6	-3.4	-0.4	-4.9	-4.2	-3.9	-0.7	-2.7	1.0	-0.5	0.5	0.7
小売売上 Retail Sales	(y/y, %)	3.9	2.6	-9.7	-6.9	-9.6	-9.9	-12.5	-5.8	-6.4	-4.7	-6.2	-4.9	-6.1
銀行貸出伸び率 Bank Lending Growth	(y/y, %)	17.2	22.8	8.9	18.6	14.8	15.3	8.9	8.6	6.5	8.4	8.6	9.6	-
消費者物価上昇率 Consumer Price Index	(y/y, %)	6.8	7.8	15.6	16.2	15.8	15.7	14.5	8.4	9.8	8.1	7.3	7.3	7.3
賃金上昇率 Wage Growth	(y/y, %)	12.3	8.3	4.2	5.1	5.3	4.0	2.8	7.5	5.6	8.1	8.8	6.2	6.4
失業率 Unemployment rate	(%)	5.5	5.2	5.6	5.7	5.7	5.3	5.7	5.9	5.8	5.8	6.0	5.9	5.6
貿易収支* Trade Balance	(US\$ m)	212,300	211,163	160,823	48,235	46,805	31,766	34,017	25,430	8,508	8,054	8,868	7,661	-
輸出額 Exports	(US\$ m)	527,267	497,833	343,543	90,267	91,597	79,294	82,385	61,368	17,592	20,245	23,531	21,982	-
輸出伸び率 Exports Growth	(y/y, %)	0.5	-5.6	-31.0	-26.4	-31.1	-37.1	-29.2	-32.0	-37.4	-30.9	-28.4	-28.8	-
輸入額 Imports	(US\$ m)	314,967	286,670	182,720	42,032	44,792	47,528	48,368	35,938	9,084	12,191	14,663	14,321	-
輸入伸び率 Imports Growth	(y/y, %)	-0.7	-9.0	-36.3	-37.2	-40.7	-36.6	-30.2	-14.5	-18.9	-16.6	-9.6	-6.2	-
経常収支 Current Account Balance	(US\$ m)	34,801	58,432	69,564	29,999	16,638	7,975	14,952	12,556					
資本収支 Capital & Financial Account Balance	(US\$ m)	45,817	88,181	72,221	37,491	19,291	2,616	12,824	7,479					
対内直接投資 Foreign Direct Investment (inflow)	(US\$ m)	69,219	22,891	4,839	2,058	-514	-428	3,723	-280					
外貨準備高 International Reserve	(US\$ m)	469,603	339,370	319,835	309,092	313,341	322,374	319,835	328,871					
対外債務残高 Gross External Debt	(US\$ m)	728,864	599,901	515,848	556,231	555,632	536,492	518,508	520,219					
株価指数 Stock price index		1,441	1,430	1,683	1,656	1,668	1,667	1,741	1,788	1,708	1,774	1,875	1,914	1,909
短期金利 (Interbank 3m) Short-term interest rates (Interbank 3m)		7.32	10.02	15.04	20.05	14.79	12.91	12.57	12.38	12.43	12.35	12.36	12.04	11.98
長期金利 (10年物国債) Long-term interest rates (Gov. 10y bond yields)		7.17	9.39	11.39	13.37	10.95	11.26	10.05	9.92	10.33	10.20	9.29	9.20	8.88
Rouble/USD		31.86	38.61	61.28	62.90	52.78	63.19	66.18	74.67	77.07	77.26	70.10	66.57	65.91
Rouble/Euro		42.32	51.04	68.03	70.98	58.32	70.30	72.47	82.28	83.71	85.62	77.92	75.43	74.47
JPY/Rouble		3.07	2.79	2.00	1.90	2.31	1.95	1.84	1.55	1.55	1.49	1.61	1.65	1.66

(資料) Macrobond、(注) 実質GDP成長率の前期比データは季節調整済、貿易収支は通関ベース
(Source) Macrobond, Note) Q/Q real GDP growth: seasonally adjusted. Trade balance: Custom based

カザフスタン / Kazakhstan

カザフスタン/Kazakhstan

	2013	2014	2015	15/Q1	Q2	Q3	Q4	16/Q1	16/01	02	03	04	05
名目GDP Nominal GDP (US\$ bn)	224.3	215.8	183.1	44.6	47.6	49.0	43.3	-					
実質GDP成長率 Real GDP Growth (y/y, %)	5.2	3.8	1.6	2.3	1.7	1.2	1.2	-					
鉱工業生産 Industrial Production (y/y, %)	2.3	0.2	-1.6	0.6	0.7	-4.2	-3.2	-0.8	-0.7	0.1	-1.8	-3.1	-5.3
小売売上 Retail Sales (y/y, %)	12.8	12.0	-0.1	3.6	2.4	1.8	-8.0	-3.1	-7.3	-1.1	-0.8	0.0	2.2
消費者物価上昇率 Consumer Price Index (y/y, %)	5.8	6.7	6.6	6.3	4.3	4.0	11.9	15.1	14.4	15.2	15.7	16.3	16.7
賃金上昇率 Wage Growth (y/y, %)	6.8	10.9	3.8	9.1	2.9	2.0	3.8	11.9					
失業率 Unemployment rate (%)	5.2	5.0	5.0	5.0	5.0	4.9	5.0	5.0	5.1	5.0	4.9	4.9	4.9
貿易収支* Trade Balance (US\$ m)	33,639	37,025	15,540	4,755	3,841	3,992	2,951	3,146	1,186	1,183	777	678	-
輸出額 Exports (US\$ m)	82,512	78,238	45,726	11,939	12,120	11,674	9,992	8,311	2,753	2,836	2,723	2,718	-
輸出伸び率 Exports Growth (y/y, %)	-10.6	-5.2	-41.6	-47.1	-37.1	-39.0	-42.1	-30.4	-63.4	181.6	-20.1	-29.2	-
輸入額 Imports (US\$ m)	48,873	41,213	30,186	7,184	8,279	7,682	7,041	5,166	1,567	1,654	1,946	2,039	-
輸入伸び率 Imports Growth (y/y, %)	9.7	-15.7	-26.8	-15.7	-22.3	-30.8	-35.6	-28.1	-42.4	-22.8	-16.3	-30.9	-
経常収支 Current Account Balance (US\$ m)	1,187	6,375	-5,823	-125	-2,252	-1,799	-1,647	-1,021					
資本収支 Capital & Financial Account Balance (US\$ m)	-310	-6,798	-10,479	-2,578	-1,593	-3,398	-2,910	-1,464					
対内直接投資 Foreign Direct Investment (inflow) (US\$ m)	10,011	7,091	6,615	2,558	645	1,739	1,672	2,738					
外貨準備高 International Reserve (US\$ m)	19,127	21,814	20,497	21,597	21,123	20,637	20,497	19,441					
対外債務残高 Gross External Debt (US\$ m)	150,033	157,428	153,456	154,409	155,541	155,649	153,456	-					
株価指数 Stock price index	950	1,088	864	839	872	853	893	925	844	914	1,008	968	980
短期金利 (Interbank 3m) Short-term interest rates (Interbank 3m)	4.62	6.78	10.18	9.00	9.00	9.24	13.42	17.45	17.81	17.64	16.96	17.00	16.23
Tenge/USD	152.20	179.35	223.21	184.82	185.89	218.71	301.70	355.44	364.43	357.86	345.01	336.66	333.06
Tenge/Euro	209.75	217.05	242.44	198.52	207.28	244.16	327.68	405.05	394.32	388.77	393.17	385.60	370.85
JPY/Tenge	0.69	0.67	0.54	0.65	0.66	0.55	0.40	0.32	0.33	0.32	0.33	0.32	0.33

(資料) Macrobond、(注) 貿易収支は通関ベース

(Source) Macrobond, (Note) Trade balance: Custom based

ウクライナ / Ukraine

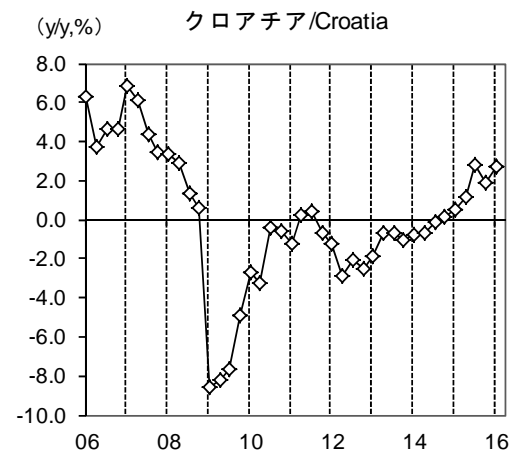
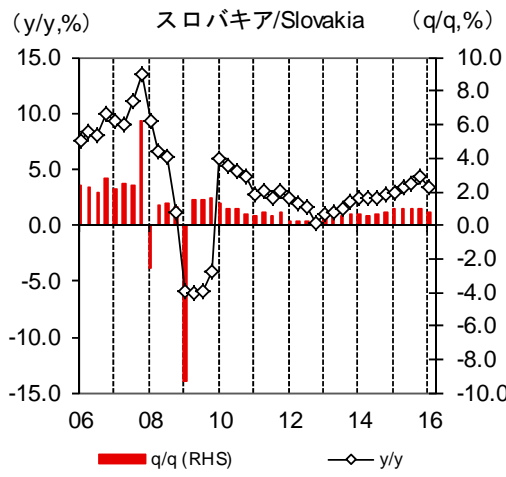
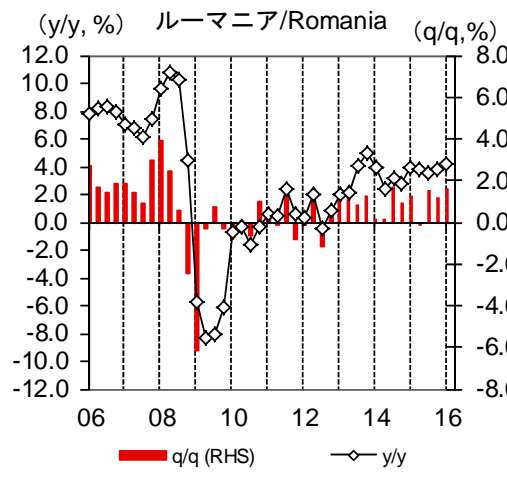
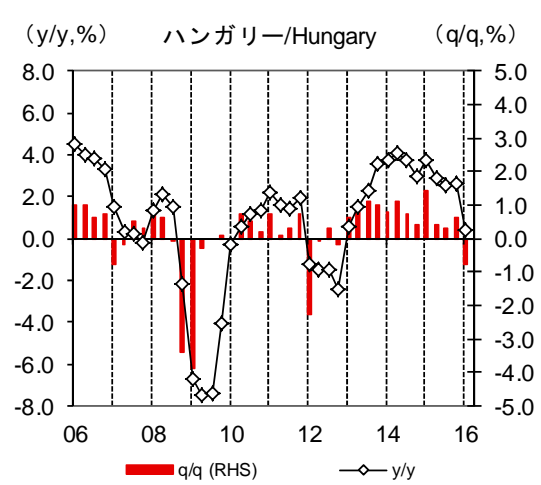
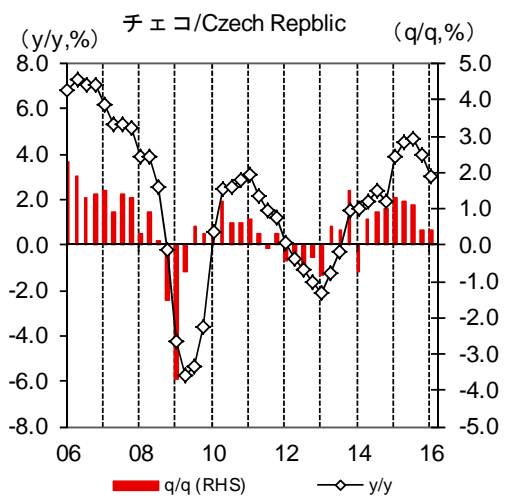
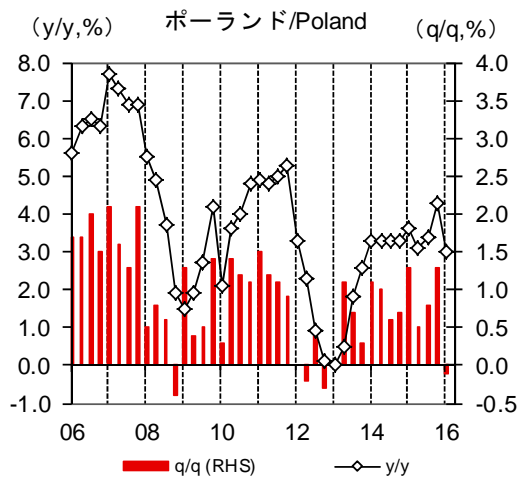
ウクライナ/Ukraine

	2013	2014	2015	15/Q1	Q2	Q3	Q4	16/Q1	16/01	02	03	04	05	
名目GDP Nominal GDP	(US\$ bn)	179.7	132.4	90.6	17.9	21.1	25.8	25.4	17.6					
実質GDP成長率 Real GDP Growth	(y/y, %)	-0.1	-6.3	-10.1	-17.0	-14.7	-7.2	-1.4	0.1					
鉱工業生産 Industrial Production	(y/y, %)	-4.8	-10.3	-14.2	-21.6	-20.2	-8.1	-3.5	3.6	-1.7	7.6	4.8	3.5	0.5
小売売上 Retail Sales	(y/y, %)	6.1	-8.3	-22.5	-25.6	-26.5	-19.1	-17.4	4.0	0.1	-1.5	13.4	12.2	4.4
銀行貸出伸び率 Bank Lending Growth	(y/y, %)	11.7	12.1	-3.8	17.9	5.8	-0.5	-3.8	-13.8	-1.4	-21.5	-13.8	-10.2	-5.4
消費者物価上昇率 Consumer Price Index	(y/y, %)	-0.3	12.1	48.5	36.3	58.9	53.3	45.4	31.3	40.3	32.7	20.9	9.8	7.5
賃金上昇率 Wage Growth	(y/y, %)	8.0	6.1	21.1	11.8	17.9	24.5	29.0	26.6	26.3	26.2	27.4	22.4	-
失業率 Unemployment rate	(%)	7.4	9.0	9.2	9.6	9.2	9.0	9.1	9.9					
貿易収支* Trade Balance	(US\$ m)	-13,652	-468	633	384	863	-510	-104	-961	-295	-436	-230	81	-
輸出額 Exports	(US\$ m)	63,312	53,914	38,135	9,424	9,107	9,583	10,021	7,719	2,043	2,679	2,997	3,095	-
輸出伸び率 Exports Growth	(y/y, %)	-8.0	-14.8	-29.3	-33.6	-36.9	-28.2	-16.1	-18.1	-31.5	-10.4	-13.2	0.7	-
輸入額 Imports	(US\$ m)	76,964	54,382	37,502	9,040	8,244	10,093	10,126	8,680	2,338	3,115	3,227	3,014	-
輸入伸び率 Imports Growth	(y/y, %)	-9.1	-29.3	-31.0	-36.5	-40.3	-23.1	-23.3	-4.0	-22.3	9.0	1.7	5.4	-
経常収支 Current Account Balance	(US\$ m)	-16,518	-4,596	-176	-429	315	221	-283	-1,101					
資本収支 Capital & Financial Account Balance	(US\$ m)	-18,661	9,511	-113	2,006	-28	-969	-1,122	-91					
対内直接投資 Foreign Direct Investment (inflow)	(US\$ m)	4,509	847	3,050	540	852	915	743	1,289					
外貨準備高 International Reserve	(US\$ m)	18,776	6,622	12,368	9,059	9,357	11,784	12,368	11,631					
対外債務残高 Gross External Debt	(US\$ m)	142,079	126,308	118,729	124,322	125,061	125,107	118,729	-					
株価指数 Stock price index		312.3	401.2	343.1	413.5	367.2	333.6	260.8	240.6	241.2	238.5	242.1	230.4	219.3
短期金利 (Interbank 3m) Short-term interest rates (Interbank 3m)		15.78	18.76	20.34	20.04	20.08	20.90	20.32	19.15	19.47	19.11	18.89	18.67	18.28
Hryvnia/USD		8.15	11.98	21.86	20.94	21.61	21.85	22.99	25.77	24.40	26.52	26.35	25.63	25.29
Hryvnia/Euro		10.83	15.90	24.24	23.57	23.90	24.28	25.16	28.41	26.46	29.41	29.32	29.06	28.59
JPY/Hryvnia		11.97	8.84	5.54	5.69	5.62	5.59	5.28	4.47	4.85	4.32	4.29	4.28	4.31

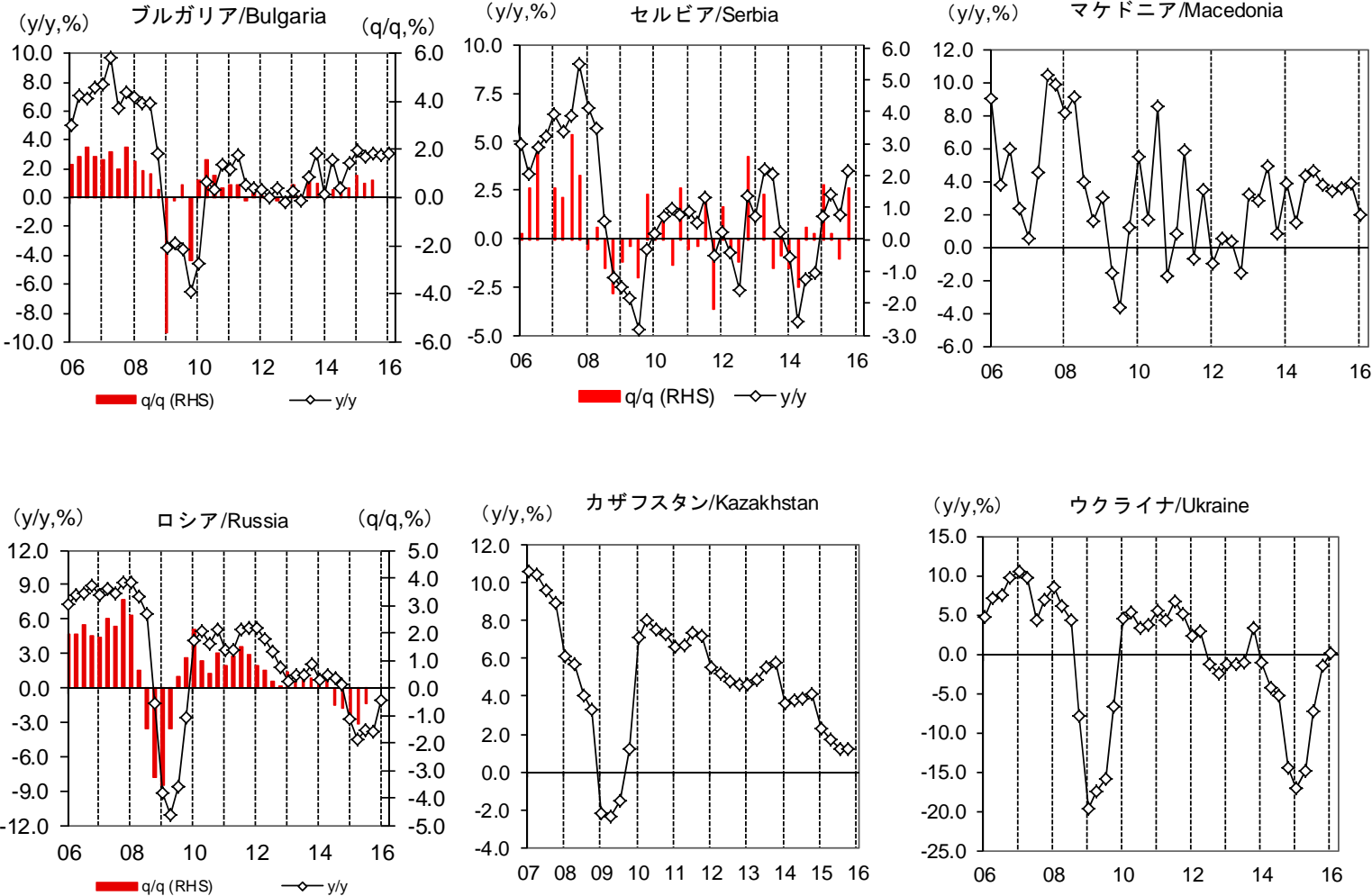
(資料) Macrobond、(注) 貿易収支は通関ベース

(Source) Macrobond, (Note) Trade balance: Custom based

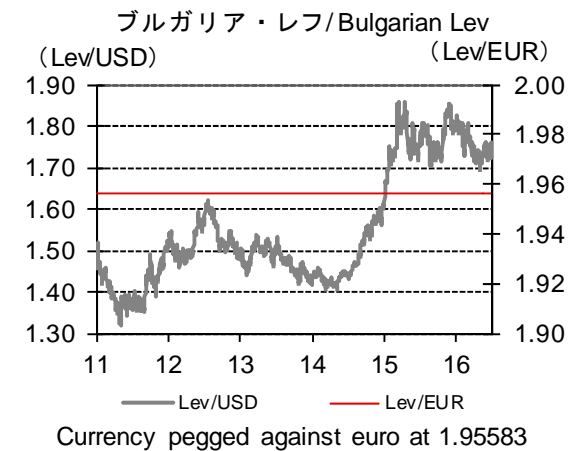
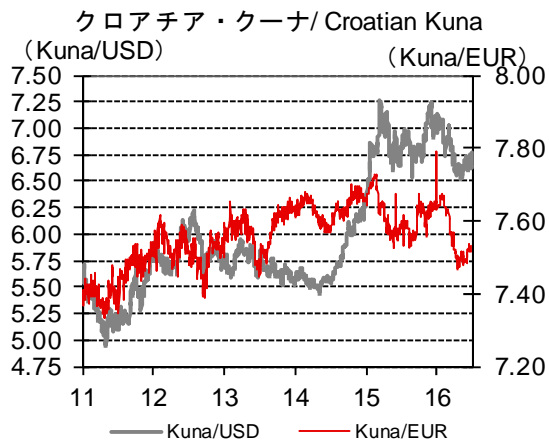
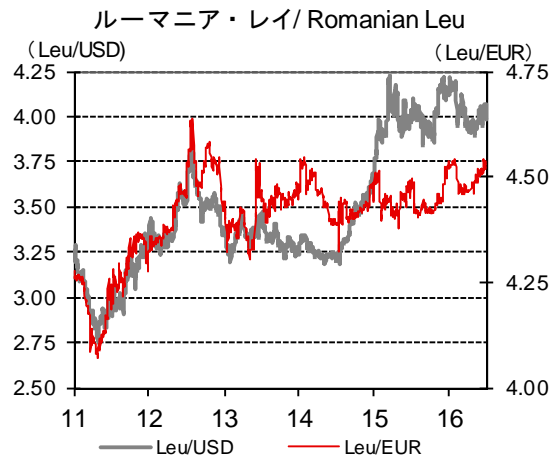
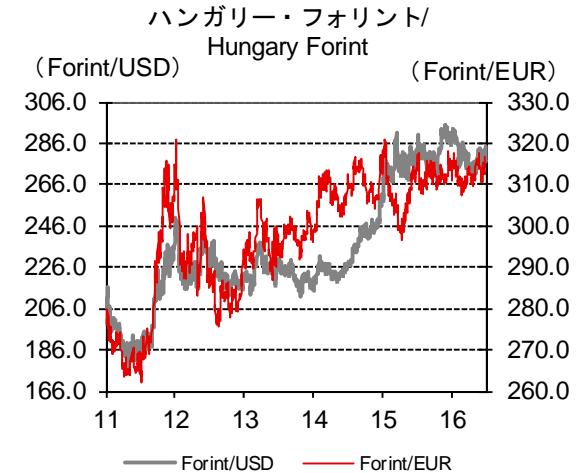
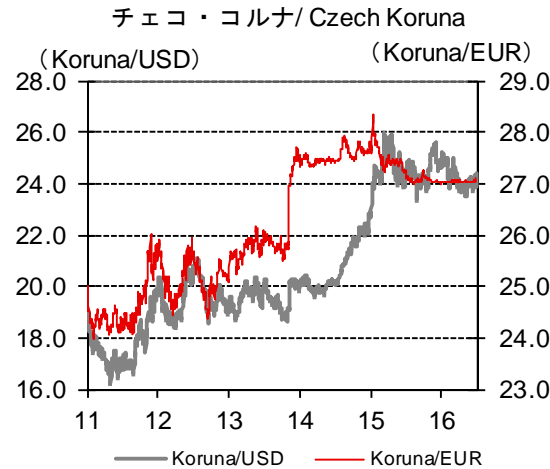
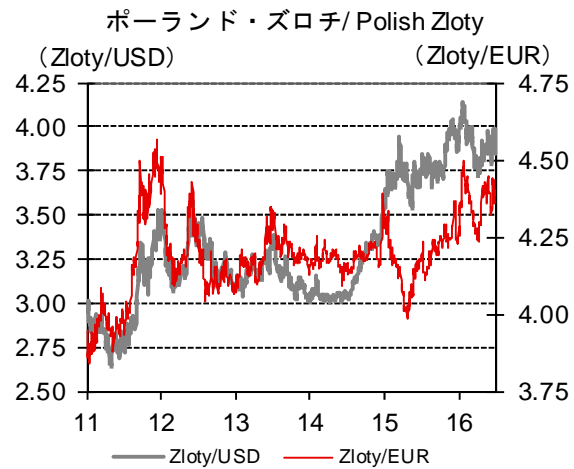
実質GDP成長率 / Real GDP growth rate



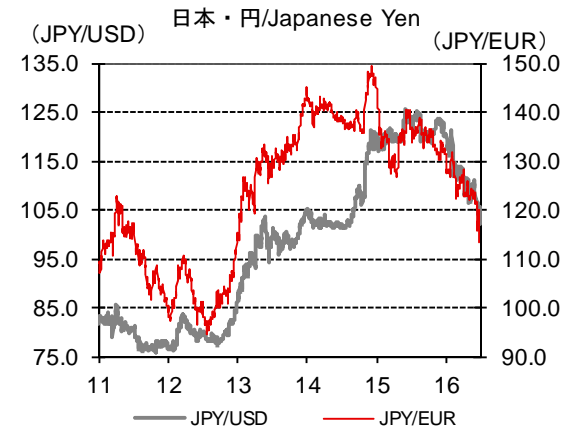
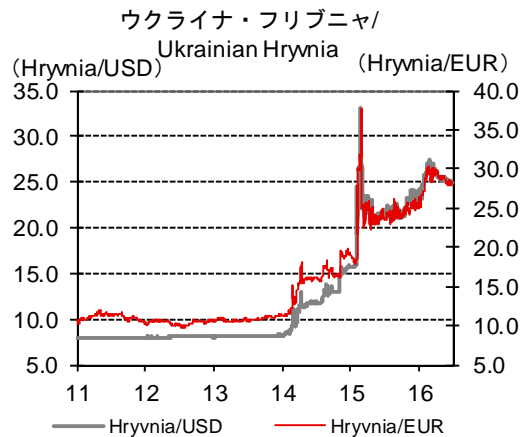
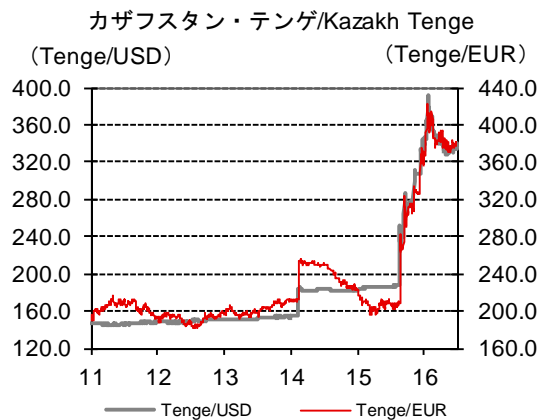
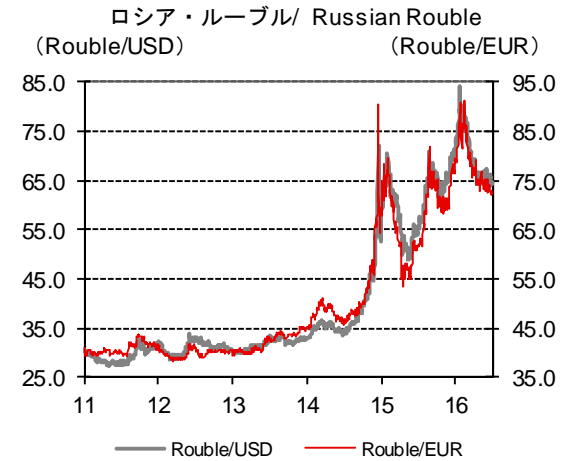
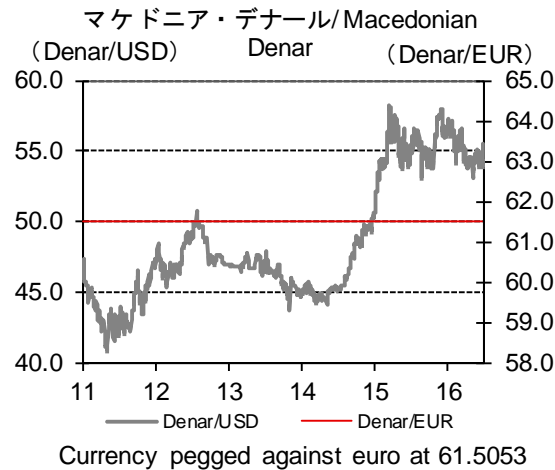
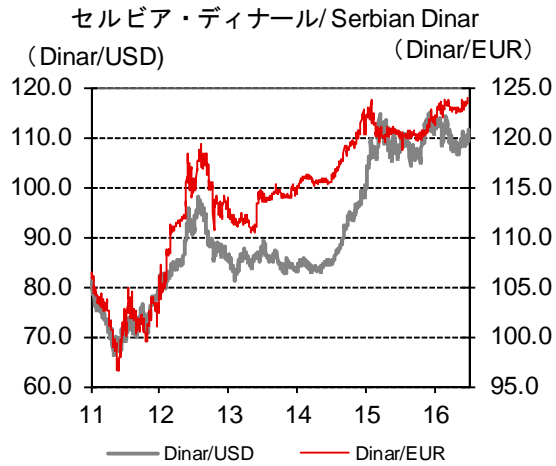
実質GDP成長率 / Real GDP growth rate



為替相場 / Exchange rates




為替相場 / Exchange rates



当資料は情報提供のみを目的として作成されたものであり、金融商品の売買や投資など何らかの行動を勧誘するものではありません。ご利用に関しては、すべてお客様御自身でご判断下さいますよう、宜しくお願い申し上げます。当資料は信頼できると思われる情報に基づいて作成されていますが、当室はその正確性を保証するものではありません。内容は予告なしに変更することがありますので、予めご了承下さい。また、当資料は著作物であり、著作権法により保護されています。全文または一部を転載する場合は出所を明記してください。

The Bank of Tokyo-Mitsubishi UFJ, Ltd. (“BTMU”) is a limited liability stock company incorporated in Japan and registered in the Tokyo Legal Affairs Bureau (company no. 0100-01-008846). BTMU’s head office is at 7-1 Marunouchi 2-Chome, Chiyoda-Ku, Tokyo 100-8388, Japan. BTMU’s London branch is registered as a UK establishment in the UK register of companies (registered no. BR002013). BTMU is authorised and regulated by the Japanese Financial Services Agency. BTMU’s London branch is authorised by the Prudential Regulation Authority (FCA/PRA no. 139189) and subject to regulation by the Financial Conduct Authority and limited regulation by the Prudential Regulation Authority. Details about the extent of BTMU London branch’s regulation by the Prudential Regulation Authority are available from us on request.



This report shall not be construed as solicitation to take any action such as purchasing/selling/investing in financial market products. In taking any action, each reader is requested to act on the basis of his or her own judgment. This report is based on information believed to be reliable, but we do not guarantee, and do not accept any liability whatsoever for, its accuracy and we accept no liability whatsoever for any loss or damage of any kind arising out of the use of all or any part of this report. The contents of the report may be revised without advance notice. Also, this report is a literary work protected by copyright. No part of this report may be reproduced in any form without express statement of its source.

The Bank of Tokyo-Mitsubishi UFJ, Ltd. retains copyright to this report and no part of this report may be reproduced or re-distributed without the written permission of The Bank of Tokyo-Mitsubishi UFJ, Ltd. The Bank of Tokyo-Mitsubishi UFJ, Ltd. expressly prohibits the re-distribution of this report to Retail Customers, via the internet or otherwise and The Bank of Tokyo-Mitsubishi UFJ, Ltd., its subsidiaries or affiliates accept no liability whatsoever to any third parties resulting from such re-distribution.

The Bank of Tokyo-Mitsubishi UFJ, Ltd.
25 Ropemaker street, London
EC2Y 9AN, UK

www.mufg.jp/
www.mufg.jp/english