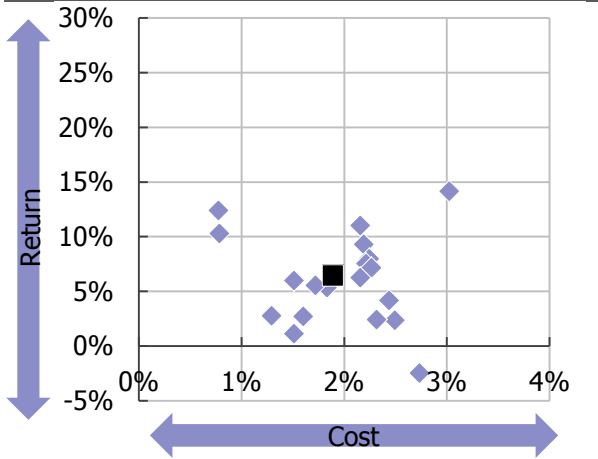


Providing Stable Fund Performance

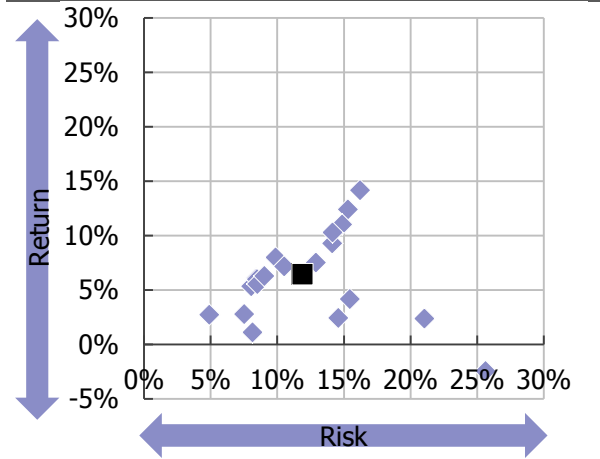
- Among top 20 AUM funds with the set period of five years or over, returns on 17 funds surpass costs.
- When confining to the investment trust funds that are currently held, the customers with gains in investment performance account for 75% of the total, whereas 80% of the customers earned profits when taking into consideration gains/losses due to sales and/or redemption in the past.

【Fig. 1】 Cost/return² on AUM of Top 20 investment trust funds¹



Fund Name	Cost	Risk	Return
1 UBS Australian Bond Open (Monthly Income Type)	1.51%	8.15%	1.11%
2 PIMCO High Income Monthly Income Type Fund	1.84%	8.06%	5.33%
3 Mitsubishi UFJ Index 225 Open	0.78%	15.32%	12.38%
4 Shinko US-REIT Open	2.19%	14.13%	9.29%
5 LM Australian High Dividend Equity Fund (Monthly Distribution Type)	2.44%	15.46%	4.15%
6 Fidelity US High Yield Fund	2.25%	9.88%	7.97%
7 Nissay J-REIT Fund (Monthly Settlement Type)	1.51%	8.41%	6.03%
8 Kokusai Global Healthcare & Bio Fund	3.02%	16.22%	14.17%
9 Mitsubishi UFJ Global Bond Open (Monthly Distribution Type)	1.30%	7.52%	2.76%
10 Kokusai Trend Allocation Open	1.60%	4.91%	2.71%

【Fig. 2】 Risk/return² on AUM of Top 20 investment trust funds¹

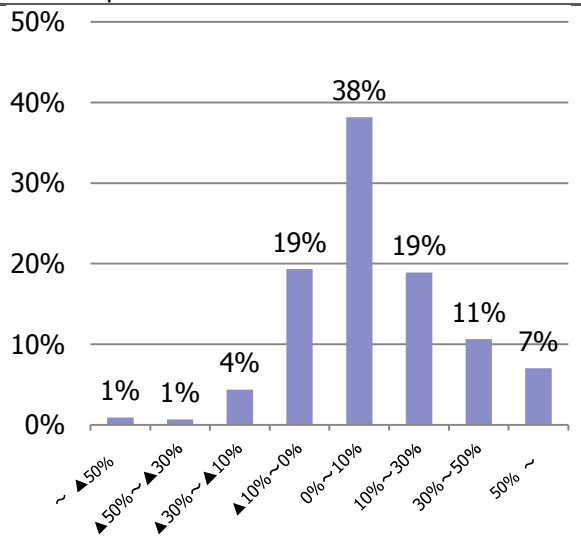


Fund Name	Cost	Risk	Return
11 Kokusai World REIT Open (1M)	2.21%	12.92%	7.52%
12 Kokusai Indian Bond Open (1M)	2.27%	10.52%	7.15%
13 Fidelity US REIT Fund B	2.16%	14.87%	11.01%
14 Kokusai US Energy MLP Open Monthly Dividend Type Non-Hedged	2.73%	25.63%	-2.48%
15 Mitsubishi UFJ J-REIT Open (3 Month Settlement Type)	1.51%	8.49%	5.97%
16 Fidelity World Three Asset Class Fund (Monthly Fiscal Year Type)	1.72%	8.51%	5.54%
17 Pimco Global High Yield Fund(Monthly Income Type)	2.16%	9.04%	6.26%
18 MUAM Emerging High Yield Corporate Bond Fund Currency Series (BRL)	2.49%	21.04%	2.35%
19 Mitsubishi UFJ TOPIX Fund	0.79%	14.15%	10.28%
20 Eastspring Investments Indonesia Bond Open	2.32%	14.59%	2.42%

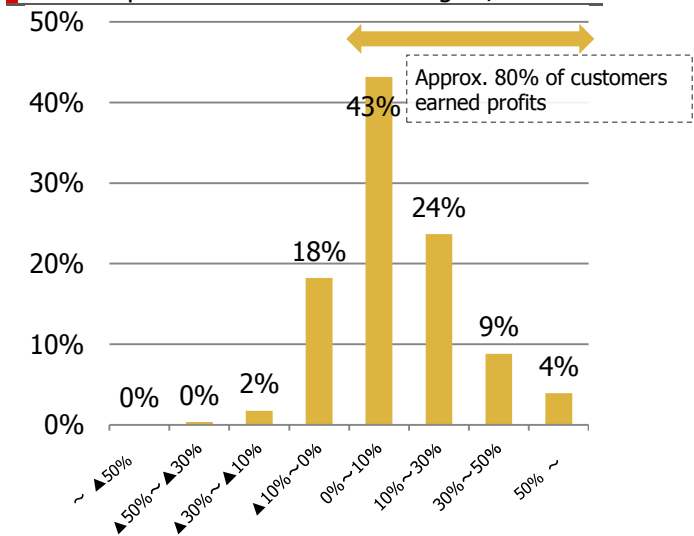
Weighted average balance (■) 1.89% 11.89% 6.46%

1. As at the end of September 2018: Top 20 AUM confining to the funds with the set period of five years or over
 2. Cost: Distribution fee/5+Trust fee rate; Risk: Average deviation of monthly return for the last five years (Annual Basis)
 Return: Total return for the last five years (Annual basis)

【Fig. 3】 Ratio of customers by gain/loss on fund performance³



【Fig. 4】 Ratio of customers by gain/loss on fund performance incl. realized gain/loss³



3. As at the end of September 2018. Denominators when calculating customer ratio by fund gain/loss: 【Fig. 3】Fair market valuation amount; and 【Fig. 4】Cumulative purchase amount.
 【Fig. 4】 Realized losses/gains are applicable to OTC investment trust funds sold or redeemed since Dec. 2014; and financial intermediary products sold or redeemed since Jan. 2017.